



Contact Precautions



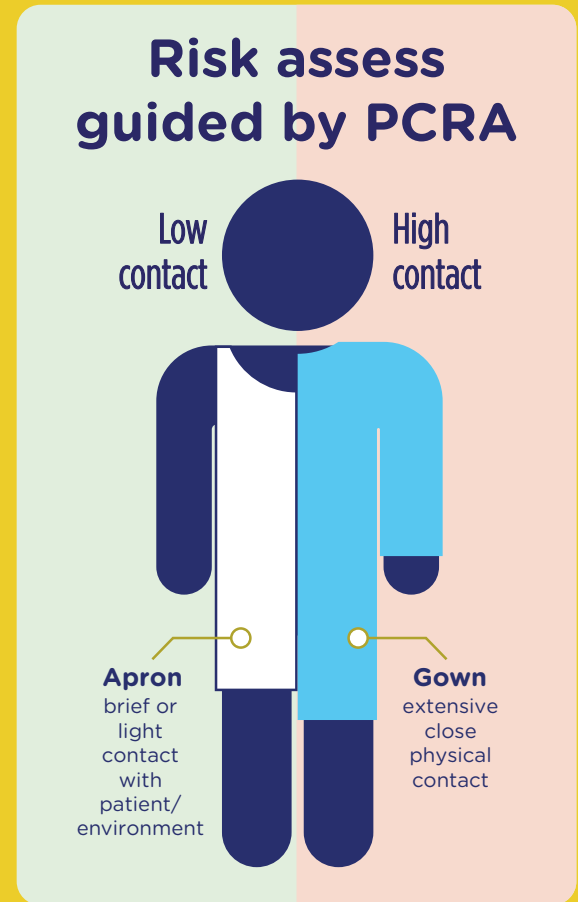
Always hand hygiene
in line with WHO 5 moments



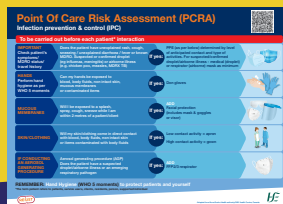
Gloves
Consider if needed guided by PCRA



Visitors: Please check with staff before you enter



Use with the following posters



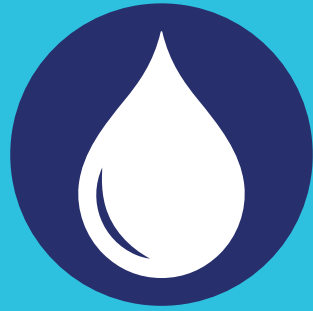
PCRA risk assessment



Gloves off



Scan QR code for more information



Droplet Precautions



Always hand hygiene in line with WHO 5 moments



Surgical mask

Risk assess FFP2 respirator guided by PCRA



Gloves

Consider if needed guided by PCRA



Eye protection

Guided by PCRA



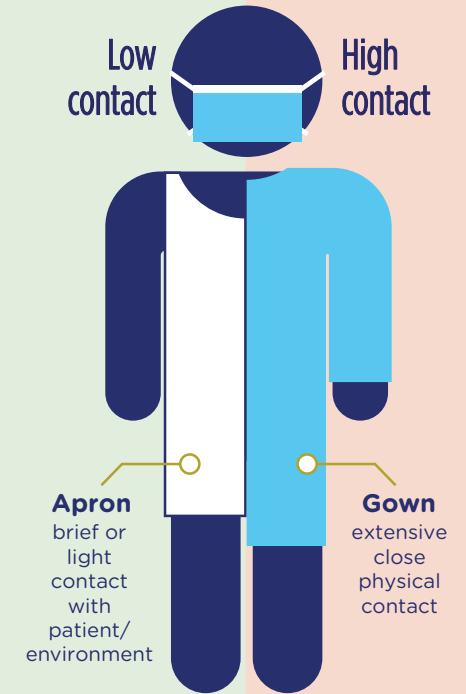
Door

Door closed. Consider safety issues

Risk assess guided by PCRA

Low contact

High contact



Visitors: Please check with staff before you enter

Use with the following posters



PCRA risk assessment



Respirator mask



Gloves off



Scan QR code for more information



Airborne Precautions



Always hand hygiene in line with WHO 5 moments



FFP2/3 respirator mask



Gloves

Consider if needed guided by PCRA



Eye protection

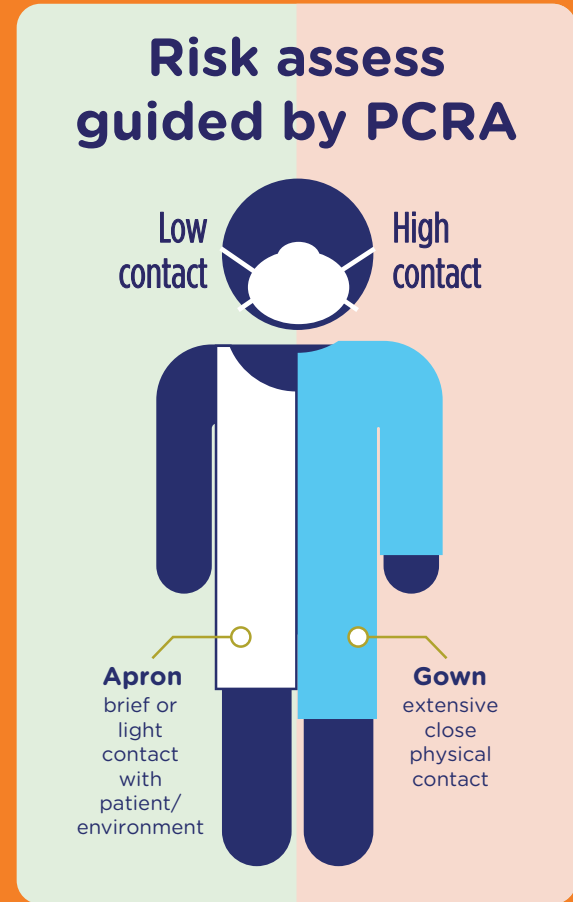


Door

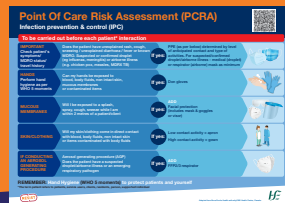
Door closed. Consider safety issues



Visitors: Please check with staff before you enter



Use with the following posters



PCRA risk assessment



Respirator mask



Gloves off



Scan QR code for more information



Protective Isolation



Always hand hygiene in line with WHO 5 moments



Surgical mask

Risk assess



Gloves

Consider if needed guided by PCRA



Door

Door closed. Consider safety issues

Risk assess guided by PCRA

Low contact

High contact

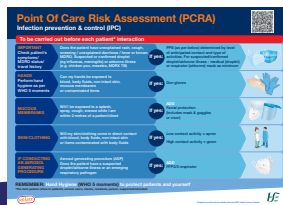
Apron
brief or light contact with patient/environment

Gown
extensive close physical contact



Visitors: Please check with staff before you enter

Use with the following posters



PCRA risk assessment



Gloves off



Scan QR code for more information